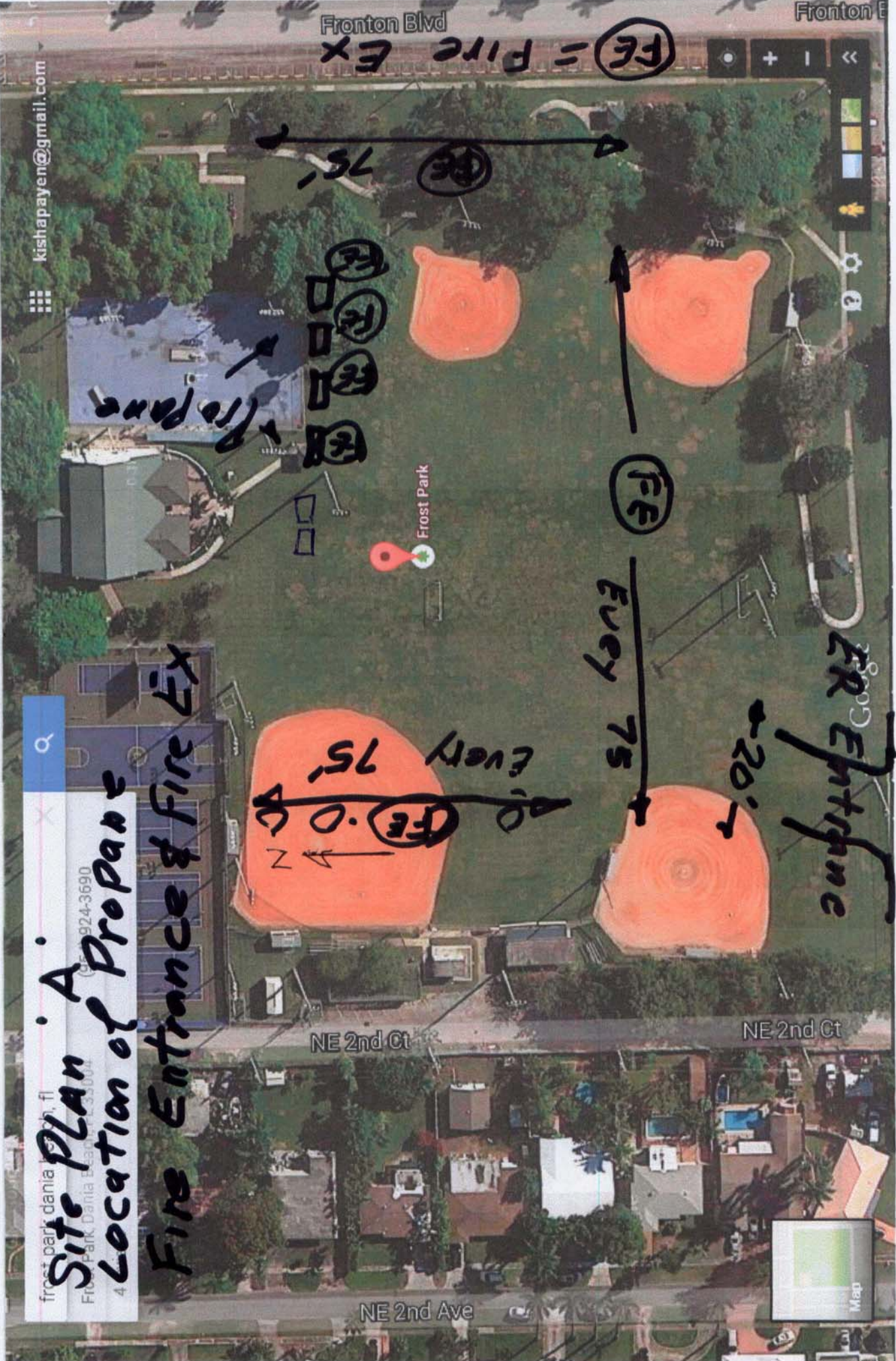


← 1 50' 01" NE 2nd St

Site Plan: A
Location of Propane

Fire Entrance & Fire Ex



kishapayen@gmail.com

Fronton Blvd

NE 2nd Ct

NE 2nd Ct

NE 2nd Ave

Fronton

451 3N

to 051 →

5

N.E. 1 ST STREET

14 15 16 17 18

25'

25'

ASPHALT PARKING (7 SPACES)

4' CONC. WALK

10' CLF

4' CONC. WALK

40' ASP

40' ASP

40' ASP

40' ASP

40' ASP

40' ASP

40' ASP

40' ASP

40' ASP

40' ASP

40' ASP

40' ASP

40' ASP

40' ASP

40' ASP

40' ASP

40' ASP

40' ASP

40' ASP

40' ASP

40' ASP

40' ASP

40' ASP

40' ASP

40' ASP

40' ASP

40' ASP

40' ASP

40' ASP

40' ASP

PAVEMENT

620.49'(M) 620.32'(P)

589.40'45" W

ANCHOR

WATER METER

CONC. BLEACHER PAD

BALL FIELD

VENUE

VENUE

VENUE

VENUE

VENUE

VENUE

VENUE

VENUE

VENUE

VENUE

VENUE

VENUE

VENUE

VENUE

VENUE

VENUE

VENUE

VENUE

VENUE

VENUE

VENUE

VENUE

VENUE

PAVEMENT

620.49'(M) 620.32'(P)

589.40'45" W

ANCHOR

WATER METER

CONC. BLEACHER PAD

BALL FIELD

VENUE

VENUE

VENUE

VENUE

VENUE

VENUE

VENUE

VENUE

VENUE

VENUE

VENUE

VENUE

VENUE

VENUE

VENUE

VENUE

VENUE

VENUE

VENUE

VENUE

VENUE

VENUE

VENUE

PAVEMENT

620.49'(M) 620.32'(P)

589.40'45" W

ANCHOR

WATER METER

CONC. BLEACHER PAD

BALL FIELD

VENUE

VENUE

VENUE

VENUE

VENUE

VENUE

VENUE

VENUE

VENUE

VENUE

VENUE

VENUE

VENUE

VENUE

VENUE

VENUE

VENUE

VENUE

VENUE

VENUE

VENUE

VENUE

VENUE

PAVEMENT

620.49'(M) 620.32'(P)

589.40'45" W

ANCHOR

WATER METER

CONC. BLEACHER PAD

BALL FIELD

VENUE

VENUE

VENUE

VENUE

VENUE

VENUE

VENUE

VENUE

VENUE

VENUE

VENUE

VENUE

VENUE

VENUE

VENUE

VENUE

VENUE

VENUE

VENUE

VENUE

VENUE

VENUE

VENUE

PAVEMENT

620.49'(M) 620.32'(P)

589.40'45" W

ANCHOR

WATER METER

CONC. BLEACHER PAD

BALL FIELD

VENUE

VENUE

VENUE

VENUE

VENUE

VENUE

VENUE

VENUE

VENUE

VENUE

VENUE

VENUE

VENUE

VENUE

VENUE

VENUE

VENUE

VENUE

VENUE

VENUE

VENUE

VENUE

VENUE

PAVEMENT

620.49'(M) 620.32'(P)

589.40'45" W

ANCHOR

WATER METER

CONC. BLEACHER PAD

BALL FIELD

VENUE

VENUE

VENUE

VENUE

VENUE

VENUE

VENUE

VENUE

VENUE

VENUE

VENUE

VENUE

VENUE

VENUE

VENUE

VENUE

VENUE

VENUE

VENUE

VENUE

VENUE

VENUE

VENUE

PAVEMENT

620.49'(M) 620.32'(P)

589.40'45" W

ANCHOR

WATER METER

CONC. BLEACHER PAD

BALL FIELD

VENUE

VENUE

VENUE

VENUE

VENUE

VENUE

VENUE

VENUE

VENUE

VENUE

VENUE

VENUE

VENUE

VENUE

VENUE

VENUE

VENUE

VENUE

VENUE

VENUE

VENUE

VENUE

VENUE

PAVEMENT

620.49'(M) 620.32'(P)

589.40'45" W

ANCHOR

WATER METER

CONC. BLEACHER PAD

BALL FIELD

VENUE

VENUE

VENUE

VENUE

VENUE

VENUE

VENUE

VENUE

VENUE

VENUE

VENUE

VENUE

VENUE

VENUE

VENUE

VENUE

VENUE

VENUE

VENUE

VENUE

VENUE

VENUE

VENUE

PAVEMENT

620.49'(M) 620.32'(P)

589.40'45" W

ANCHOR

WATER METER

CONC. BLEACHER PAD

BALL FIELD

VENUE

VENUE

VENUE

VENUE

VENUE

VENUE

VENUE

VENUE

VENUE

VENUE

VENUE

VENUE

VENUE

VENUE

VENUE

VENUE

VENUE

VENUE

VENUE

VENUE

VENUE

VENUE

VENUE

PAVEMENT

620.49'(M) 620.32'(P)

589.40'45" W

ANCHOR

WATER METER

CONC. BLEACHER PAD

BALL FIELD

VENUE

VENUE

VENUE

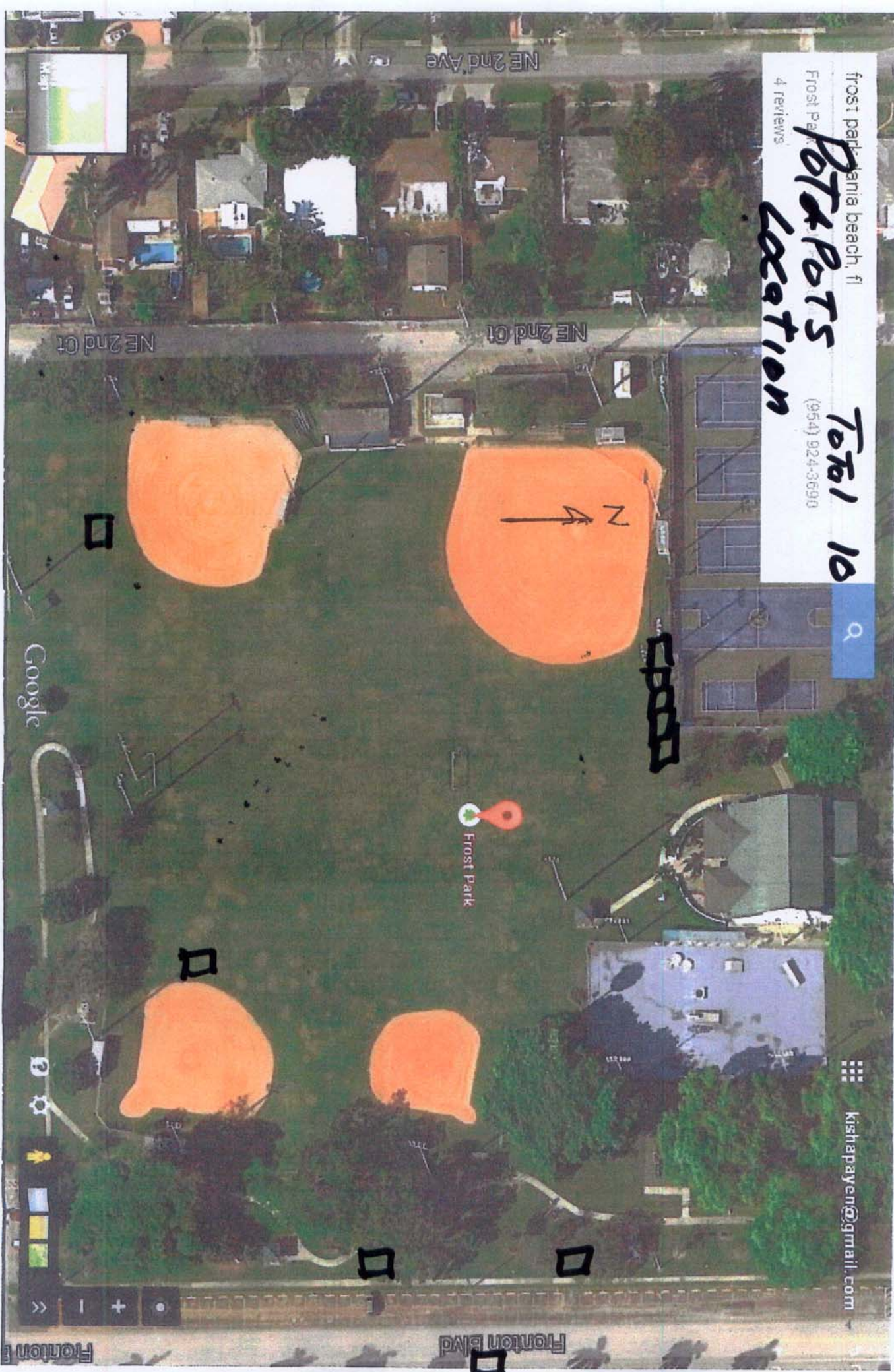
VENUE

VENUE

VENUE

NE 2nd St

frost park
Pot & Pots
location
Total 10
Frost Park
4 reviews
(954) 924-3590



NE 1st St